

3 PLAN THE INSTALLATION

NOTE: ZF MATHERS RECOMMENDS THAT THE SYSTEM BE INSTALLED IN ACCORDANCE WITH ABYC, E-11 AND P24.

3-1 SYSTEM REQUIREMENTS

The first step when installing a System is to carefully plan the installation. This includes finding proper mounting locations for the Processor(s) and Control Heads. The decision must be made on where power is going to be sourced and how the power will be routed to the Processor(s). Once the locations have been decided, lengths of electrical wiring, Harnesses and push-pull cables must be determined.

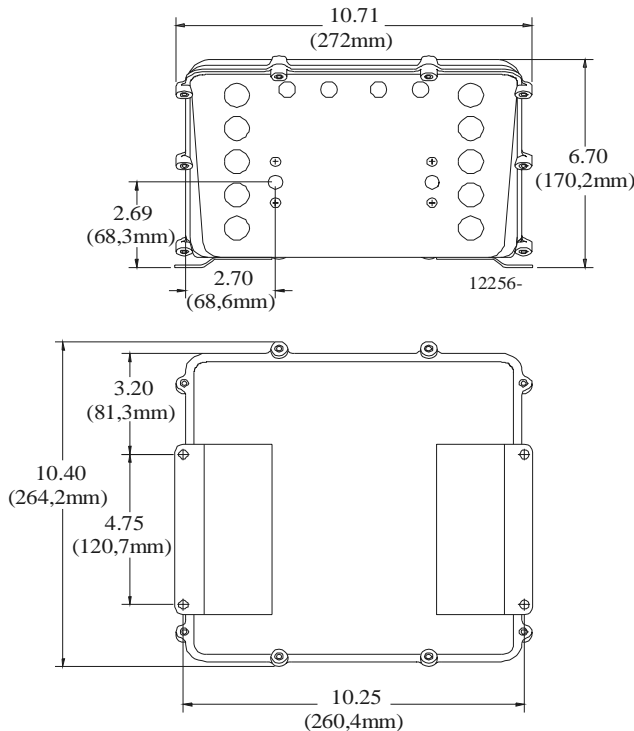


Figure 3-1: Processor Dimensions

3-1.1 Processor(s)

Processors required per engine:

Single Screw: One (1) Processor

Twin Screw: Two (2) Processors

Mounting Hardware is installer supplied.

Installation/Troubleshooting Manual is included with the Processor.

The following items must be taken into account when selecting the location for the Processor(s):

- The Processor is spray proof, but not water proof. Therefore, an area must be selected that typically stays dry.
- The engine room is the preferred location for mounting the Processor.

- Bonding is required for maximum electromagnetic compatibility (EMC) performance. Refer to Bonding: A.B.Y.C. E-11, 46 CFR 111.05, page A-33
- Locate the Processor such that the push-pull cables have the shortest, most direct path to the selector lever. The push-pull cable length should not exceed 20 feet (6,0m), the bend radius should not be less than 10 inches (254mm) and the total degrees of bends must be less than 270 degrees.

Only when the previous items have been completed, should you start the actual installation. The following sections describe the requirements for installing the components and selecting mounting locations.