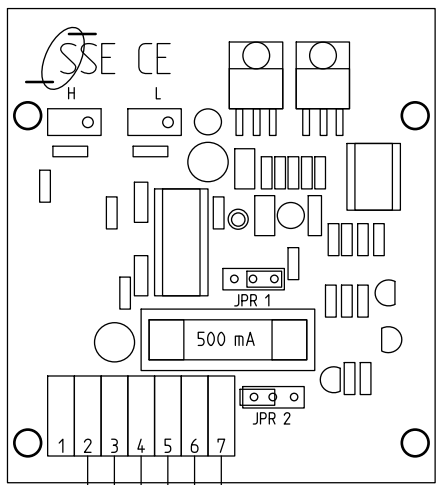
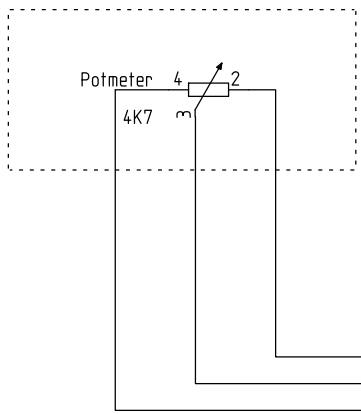


4.10 > +24V
 4.10 > VemerSWD

+24V
 VemerSWD



	JPR1			JPR2		
	1	2	3	1	2	3
PWM	---	---	---	---	---	---
V	---	---	---	---	---	---
mA	---	---	---	---	---	---

4.10 > 0V

0V

signal out 7

Plotpage: 1 of: 1 Plotdate: 13-12-2017 Plottime: 11:38:50 Revision date: 5-3-2015



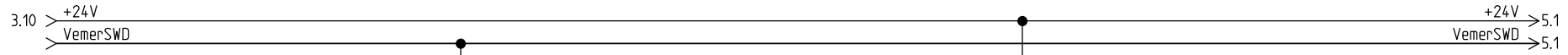
Straathof Controls
 van de plasschelaan 4 Dronten
 tel. 0321-382315 fax. 0321-336151
 www.straathofcontrols.nl

Aansluitingen potmeter -mA

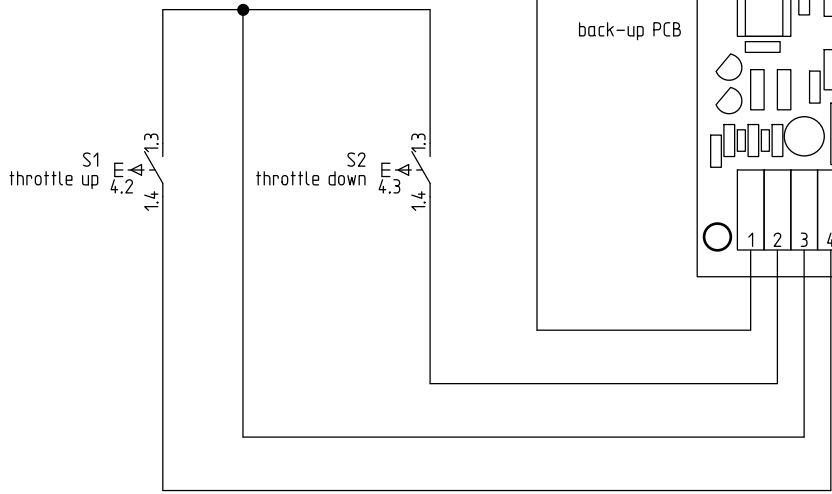
Projectname: PWM-V-mA print
 Date: 24-6-2004

Function:
 Location:
 Function page: 5

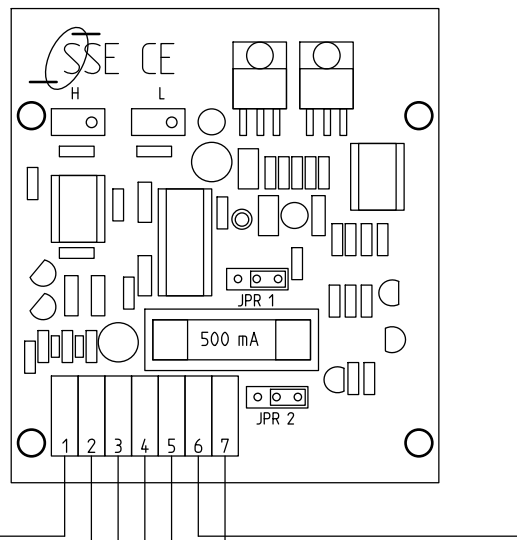
Rev.: Rev. E
 Tek.: TJS
 Page: Of: 6



this wire needs to be connected to +24V when the throttle backup print is active. This wire needs to be disconnected when the print is not active/powered to get the output back to idle again.



back-up PCB



	JPR1			JPR2		
	1	2	3	1	2	3
PWM	---					
V		---		---		
mA		---		---		



Revision date: 5-3-2015
Plottime: 11:38:20
Plotdate: 13-12-2017
of: 1
Page: 1



Straathof Controls
van de plasschelaan 4 Dronten
tel. 0321-382315 fax. 0321-336151
www.straathofcontrols.nl

Aansluitingen Backup Throttle

Projectname:	PWM-V-mA print	Function:	Rev.: Rev. E	Tek.: TJS
Date:	24-6-2004	Location:	Function page: 4	Page : Of : 6